



**MOSSINI** PRESSE

**AUTOMOTIVE TANDEM LINES**

**AUTOMOTIVE TRANSFER LINES**

**BLANKING LINES**

**HYDRAULIC PRESS LINES**

**HOUSEHOLD APPLIANCES TRANSFER LINES**

**TWIN TRANSFER LINES**

**DESMODRIVE PRESSES**

**SERVO PRESSES**

**HYDRAULIC PRESSES**

**MECHANICAL PRESSES**

**HOT FORMING**

**HOT FORGING**

**RING ROLLING MACHINES**

**FORGING PLANT**

**SPECIAL APPLICATIONS**



# COMPANY PROFILE

Mossini SpA - Headquarters - Pescate (LC) - 10000 m<sup>2</sup>



Nuova Omec  
2nd production unit  
Macerata (MC)  
8000 m<sup>2</sup>



## COMPLETE VERTICAL PRODUCTION PROCESS

ENGINEERING, DESIGN AND SOFTWARE DEVELOPMENT



FRAME CONSTRUCTION



FRAME MACHINING



STRESS RELIEVING



PRE-ASSEMBLING



COMPONENTS  
CONSTRUCTION



## Company profile

Established by Mr. Mario Mossini in 1970, MOSSINI SpA began its activity as a producer of mechanical presses.

Through the years MOSSINI has acquired and developed a high technological and experience levels and today can be considered a leading company among the producers of mechanic and hydraulic presses and supplier of automated production lines.

Projecting and production are conceived as a benefit for our company to be executed inside our own structures.

This company policy has enabled us to obtain a great professionalism at every level, allowing us also to enlarge our production range while at the same time keeping the quality features unchanged; productivity and reliability have always characterized the production philosophy of MOSSINI.

Today, MOSSINI is the only Italian company that can offer solutions for every metal forming field: traditional eccentric presses, Link-Drive presses, Desmo-Drive (patented MOSSINI system for a programmable Link-Drive), electric presses, hydraulic presses, triple effect hydraulic presses, try-out presses, multi-slide hydraulic presses. Presses and lines for hot forming and hot forging are another recent development of MOSSINI.

MOSSINI has the capability to satisfy every customer requirement with a turn-key solution that has been studied, projected, developed and produced according to the customers technical, production and economic requirements. Tele-service from MOSSINI, technicians with field experience devoted entirely to after-sales services, care for every small detail and continuous investments in research and development are the foundation for every achievement of MOSSINI.

ELECTRIC SYSTEMS



HYDRAULIC SYSTEMS



ASSEMBLY AND TESTING



TRANSPORT



INSTALLATION AND START UP





# AUTOMOTIVE TANDEM LINES

AUTOMOTIVE TANDEM LINES



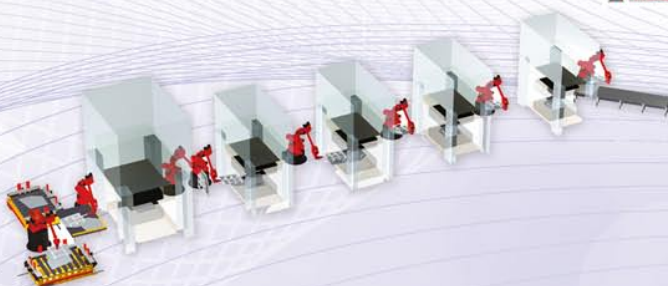
N.1 PDM-4B-LD-2000 (TABLE SIZE 5000x2500 mm.) + N.4 PDM-4B-1000 (TABLE SIZE 5000x2500 mm.)



SINGLE ACTION LINK DRIVE PRESS PDM-4B-LD-2000



DOUBLE ACTION HEAD PRESS PO-2M-T-2000





PDM-4B-LD-1250 (TABLE SIZE 5000x2500 mm.)



PDM-4B-LD-2000 (TABLE SIZE 5000x2450 mm.)



# BLANKING LINES

BLANKING LINES



PDM-4B-1000 (TABLE SIZE 4500x2500 mm.)



BLANKING LINES

# HYDRAULIC PRESS LINES



N.1 PO-2M-500 + N.4 PO-2M-315 (TABLE SIZE 2600x1300 mm.)



N.5 PO-2M-250 + N.1 PO-2M-630 + N.1 PO-2M-700 (TABLE SIZE 1600x1250 mm.)

HYDRAULIC PRESS LINES



# HOUSEHOLD APPLIANCES TRANSFER LINES

HOUSEHOLD APPLIANCES TRANSFER LINES



PDM-2B-LD-630 (TABLE SIZE 4000x1600 mm.)



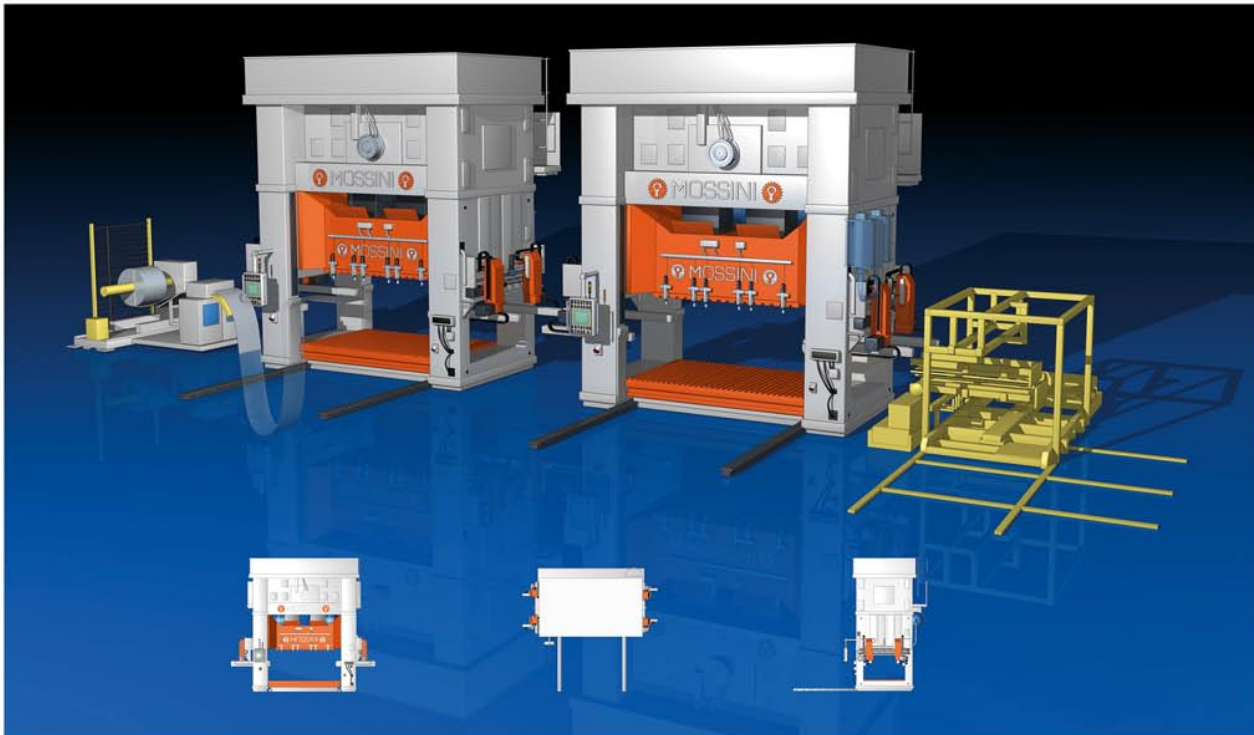
SOUNDPROOF SYSTEMS



TOOL CHANGE SYSTEMS



# TWIN TRANSFER LINES



N.1 PDM-4B-LD-1000 (TABLE SIZE 6300x2000 mm.) + N.1 PDM-4B-LD-1250 (TABLE SIZE 6300x2000 mm.)



PDM-4B-LD-1250 (TABLE SIZE 6300x2000 mm.)

TWIN TRANSFER LINES

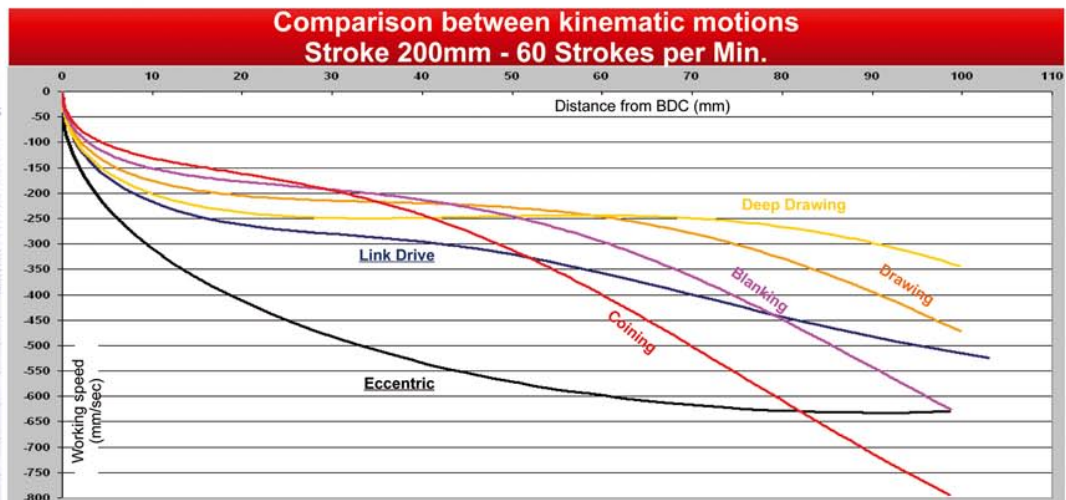
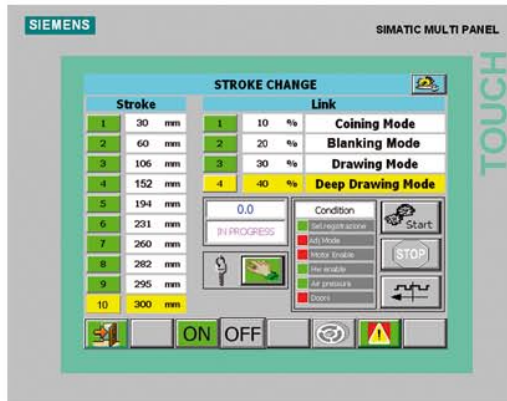


# DESMODRIVE PRESSES

DESMODRIVE PRESSES

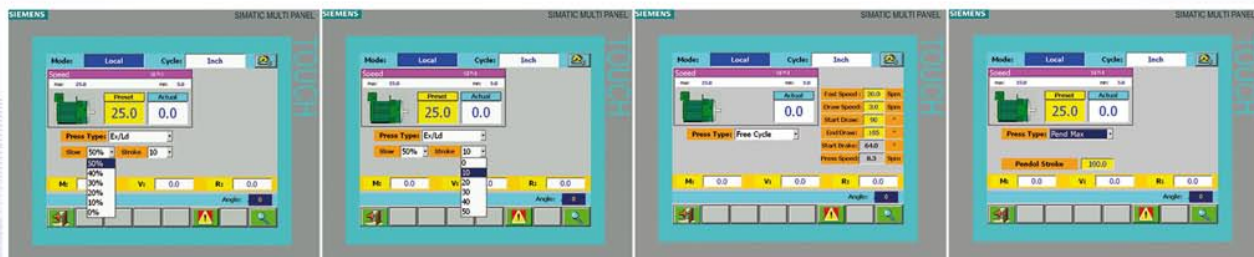
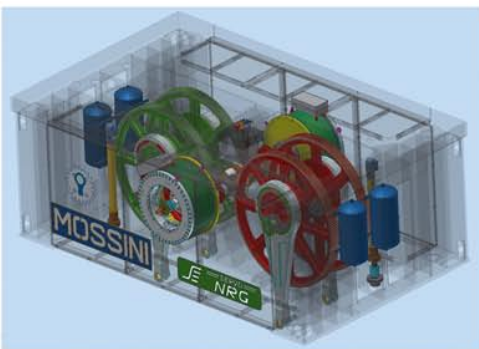


PDM-2B-D-1000 (TABLE SIZE 3500x1500 mm.)





PDM-4B-E-1000 ( TABLE SIZE 5000x2500 mm. )



**SERVO PRESSES**  
**JE NRG**



# HYDRAULIC PRESSES

## HYDRAULIC PRESSES



PO-2M-P-2000 (TRY-OUT PRESS; TABLE SIZE 5000x2500 mm.)



PO-2M-2000 (TABLE SIZE 4200x1600 mm.)



PO-2M-T-2000 (TRIPLE ACTION PRESS; TABLE SIZE 4500x2500 mm.)



PO-2M-800 (TABLE SIZE 2500x1600 mm.)



PDM-4B-1000  
(ECCENTRIC PRESS; TABLE SIZE 5000x2500 mm.)



PDM-4B-LD-1250  
(LINK DRIVE PRESS; TABLE SIZE 4500x2200 mm.)



PDM-2B-500  
(AUTOMATIC STROKE CHANGE; TABLE SIZE 2200x1250 mm.)



PDM-2B-V-100  
(HIGH SPEED PRESS; TABLE SIZE 1250x900 mm.)



# HOT FORMING

HOT FORMING



HOT FORMING PRESSES



OPEN DIE HOT FORMING PRESSES



CLOSED DIE HOT FORMING PRESSES



HOT FORGING SOLUTIONS



MANIPULATION SYSTEMS

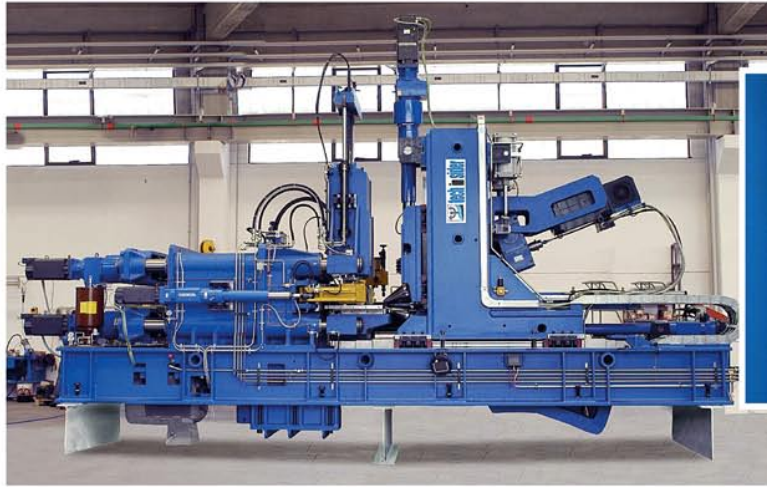


HOT FORGING PRESSES



# RING ROLLING MACHINES

## RING ROLLING MACHINES

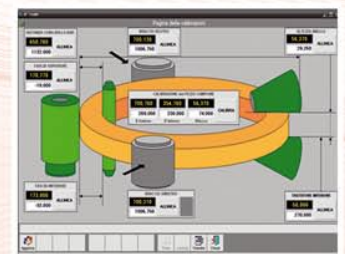


MS 50/40-1200/250



MS 160/125-3000/630

Machine Size		Ring Data		
Type		OD standard	Height	Weight
RAW		mm	mm	kg max
20/16	800/160	160 - 800	20 - 160	40
25/20	800/160	200 - 800	20 - 160	63
32/25	1000/180	200 - 1000	20 - 180	125
40/32	1250/210	200 - 1250	20 - 210	250
50/40	1400/250	250 - 1400	30 - 250	400
63/50	1600/315	250 - 1600	30 - 315	630
80/63	2000/400	300 - 2000	30 - 400	1000
100/80	2500/480	300 - 2500	30 - 480	1600
125/100	3000/560	400 - 3000	30 - 560	2500
160/125	4000/630	400 - 4000	30 - 630	4000
200/160	5000/710	500 - 5000	40 - 710	6300
250/200	6000/800	500 - 6000	40 - 800	8000
315/250	7000/900	630 - 7000	40 - 900	10000
400/315	8000/1000	800 - 8000	40 - 1000	12500
500/400	8000/1250	800 - 8000	40 - 1250	16000
630/500	8000/1600	800 - 8000	40 - 1600	20000







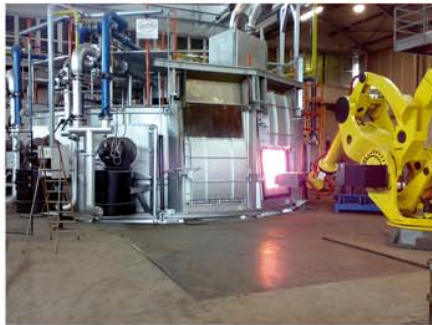
HOT FORGING PRESSES



HOT FORMING PRESSES



FURNACES



ROTARY FURNACES



MANIPULATION SYSTEMS



COMPLETE CONTROL SYSTEMS



ELECTROMECHANICAL RING ROLLING MILL



RING ROLLING MACHINES



# SPECIAL APPLICATIONS

## SPECIAL APPLICATIONS



MULTISLIDE HYDRAULIC PRESSES



PLATE HEAT EXCHANGER PRESSES



INCLINABLE PRESSES



DIE OPENER PRESSES



HYDRAULIC C-FRAME PRESSES FOR SHIPYARDS



HYDRAULIC PORTAL-PRESSES FOR RECTIFYING STEEL PLATES



**OUR MAIN CUSTOMERS**



**PRODUCTION SITE** ○

- \_PESCATO (LC), ITALY
- \_MACERATA (MC), ITALY
- \_SÃO PAULO, BRAZIL

**SERVICE** ●

- \_PESCATO (LC), ITALY
- \_MACERATA (MC), ITALY
- \_ZWÖNITZ, GERMANY
- \_KROSTOSZOWICE, POLAND
- \_SÃO PAULO, BRAZIL

**AGENTS** ●

- \_MOSCOW, RUSSIA
- \_SWEDEN
- \_STÜTTGART, GERMANY
- \_MÜNCHEN, GERMANY
- \_DRESDEN, GERMANY
- \_BIELEFELD, GERMANY
- \_KROSTOSZOWICE, POLAND
- \_ISTANBUL, TURKEY
- \_IRAN
- \_MUMBAI, INDIA
- \_SHANGHAI, CHINA
- \_SÃO PAULO, BRAZIL